



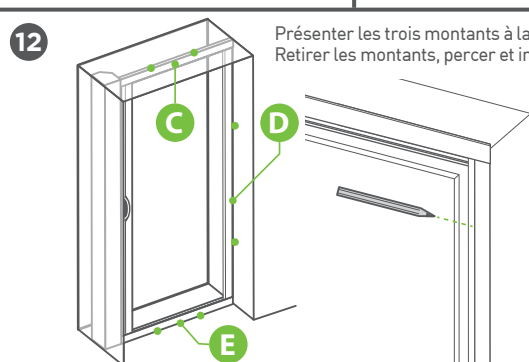
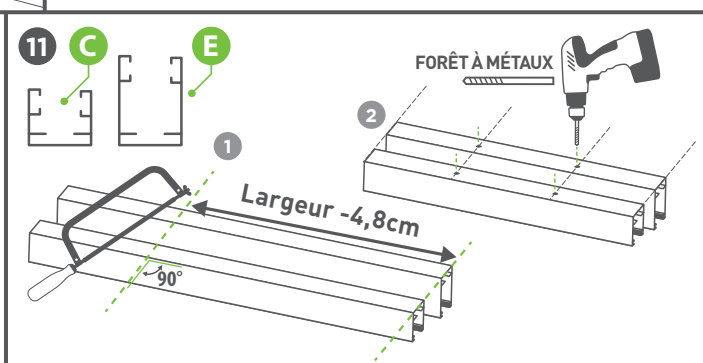
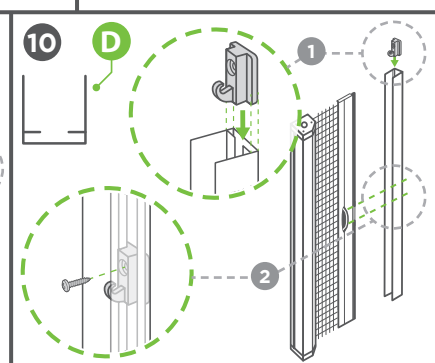
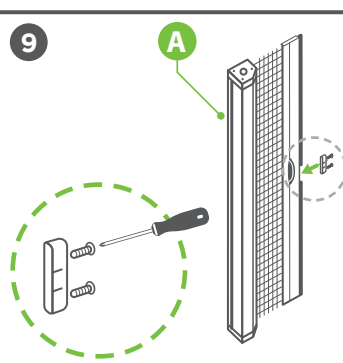
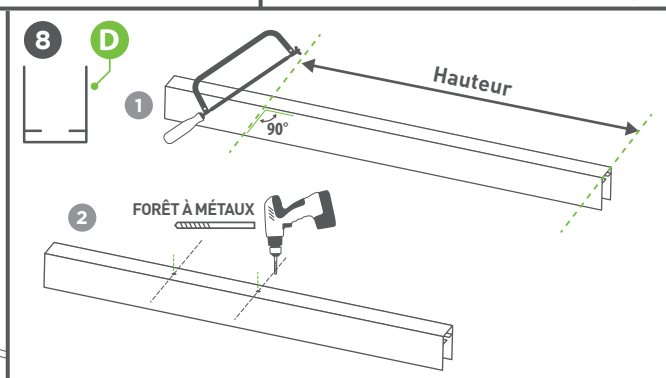
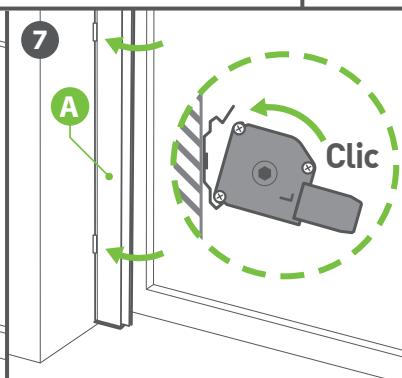
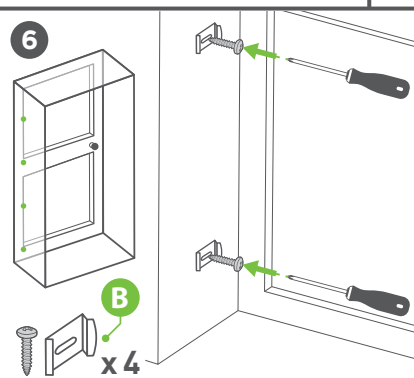
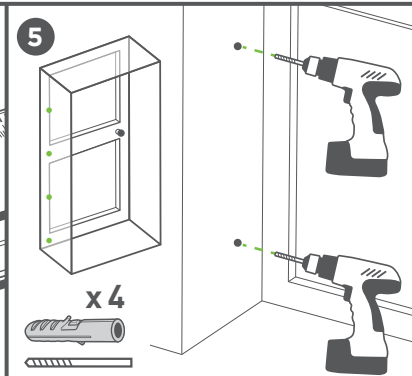
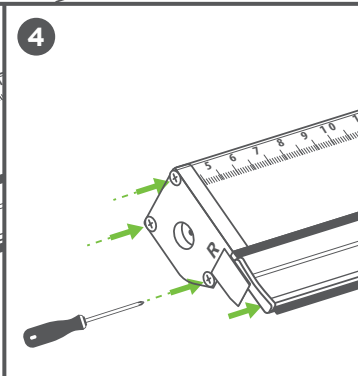
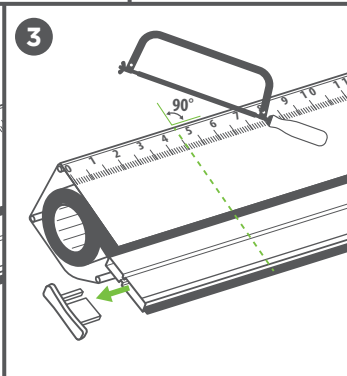
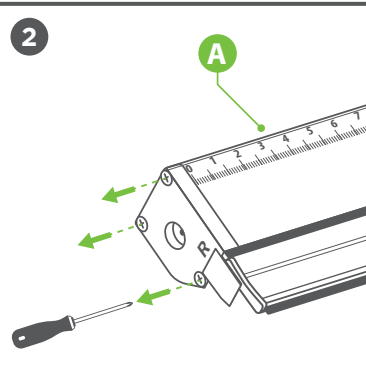
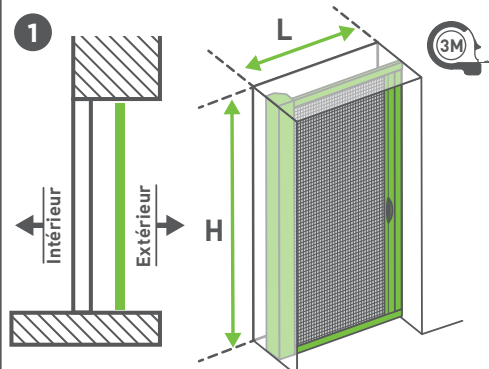
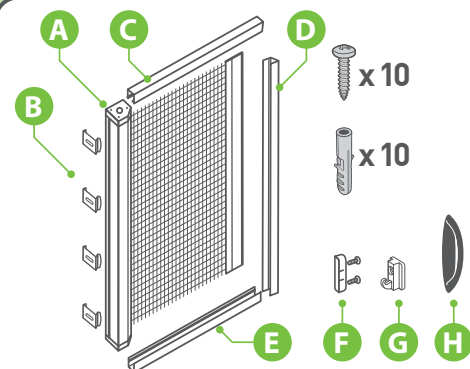
OUTILLAGE NÉCESSAIRE



NOMBRE DE PERSONNES
CONSEILLÉES : 2

Mesurez la largeur et la hauteur précises
entre les murs. Nous vous conseillons de
prendre la largeur à 3 endroits différents
(et reporter la plus petite largeur).
Reporter dans le cadre ci-dessous :

HAUTEUR : mm
LARGEUR : mm



Présenter les trois montants à la maçonnerie, tracé les trous de fixation à l'aide d'un crayon.
Retirer les montants, percer et insérer les chevilles.

